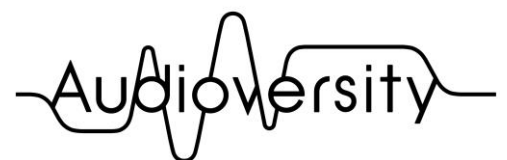




# MMP1 to TMC-1 Setup Guide Version 1.0



by Yamaha Pro Audio

## Contents

Introduction.....	3
Equipment used.....	3
Part Names and Functions- .....	4
Connection .....	7
Setting up the system .....	8
To set the TMC-1 operation mode .....	8
To connect TMC-1 to MMP1 .....	8
To set IP addresses.....	9
Precautions for a system with a Dante network .....	10
Changing the TMC-1 Settings.....	10
To connect TMC-1 to TMC-1 setup software. ....	10
To assign a function to the User Keys .....	11
To set TMC-1 IP address.....	12
To update TMC-1 Firmware and factory reset .....	12
User Key List (Version 19612) .....	13

### Version history

October 2019: Version 1.0 released

## Introduction

The TMC-1 is a monitor controller developed by CB Electronics. It allows remote control of the Yamaha MMP1 Studio Monitor Management System via Ethernet connection, allowing for level adjustments, mute on/off, and monitor source selection.

This guide explains how to connect the MMP1 to the TMC-1 and set up the system.

For more information about TMC-1 functions that can be used as to control the MMP1, see “TMC-1 - MMP1 Monitor remote” on CB Electronics’ website.

### TMC-1 - MMP1 Monitor remote

<https://www.cbelectronics.co.uk/tmc1-downloads>

Note:

- When the GPI functions for TMC-1 and MMP1 are used with the Ethernet connection, the GPI function will be prioritized.

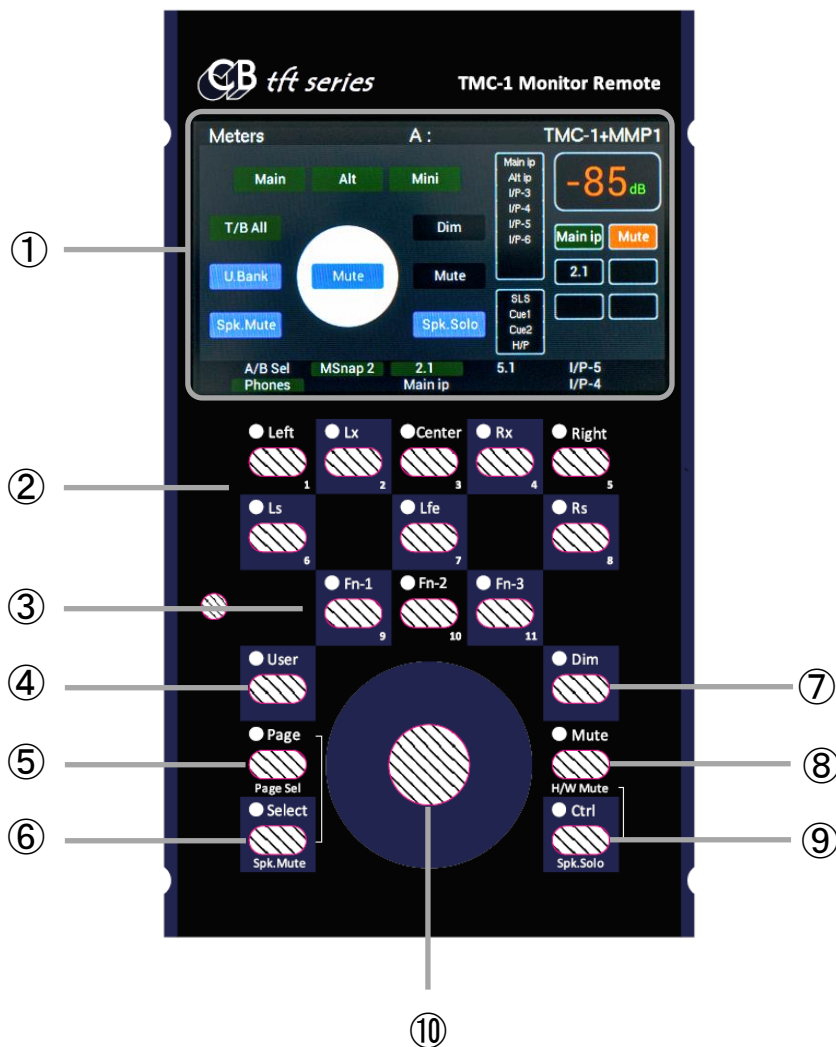
## Equipment used

The following are the main devices that are used in this guide.

- Yamaha MMP1
- CB Electronics TMC-1
- A computer with MMP1 Editor and TMC-1 setup software installed
- A network switch

(This guide uses a Yamaha SWP1 as an example, however, other types of network switches can be used as well.)

## Part Names and Functions-



### ① Display

Shows the name of the currently displayed page in the top left corner and the function names assigned to each User Key at the bottom.

### ② User Keys

Functions can be assigned to eight User Keys using the TMC-1 setup software. See "To assign a function to the User Keys" on page 11 for how to assign a function to the User Keys.

### ③ [Function] keys

The following functions are assigned by default.

[Fn-1] Speaker Select (Pressing this button allows the [User] keys to select speakers.)

[Fn-2] A/B Select (Selects either In/Out selections of A or B.)

[Fn-3] Solo Defeat (Deactivates both Stem Solo and Speaker Solo.)

### ④ [User] key

The SLS function is assigned by default. Since the MMP1 does not support the SLS function, assign another function to this key.

### ⑤ [Page] key (U.Bank)

Returns to the Meters page if the display shows a setup page other than the Meters page.

The U.Bank function is assigned to this key by default.

When the Meters page is displayed, pressing this key switches between two User Key Banks that can be set for the TMC-1. You can change the User Key functions for each bank using the TMC-1 setup software. See "To assign a function to the User Keys" on page 11 for details.

Note:

- The TMC-1's default page is the Meters page.

### ⑥ [Select] key (Spk. Mute)

Pressing this key allows the User Keys to mute and unmute the speaker outputs.

A different function can be assigned to this key using the TMC-1 setup software.

Pressing the [Page] and [Select] keys simultaneously will display the Select Page.

### ⑦ [Dim] key

Pressing this key switches the dimmer setting of the monitor outputs between on and off. When the dimmer is on, the display shows the "Dim" icon in red.

### ⑧ [Mute] key

Pressing this key will mute or unmute the monitor outputs. When they are muted, the display shows the "Mute" icon in red.

⑨ [Ctrl] key (Spk. Solo)

Pressing this key allows the User Keys to select “Speaker Solo”.

Each press of this key switches the speaker solo bank between 00 and 01.

A different function can be assigned to this key using the TMC-1 setup software.

⑩ Monitor Level encoder

Rotating this encoder adjusts the monitoring level.

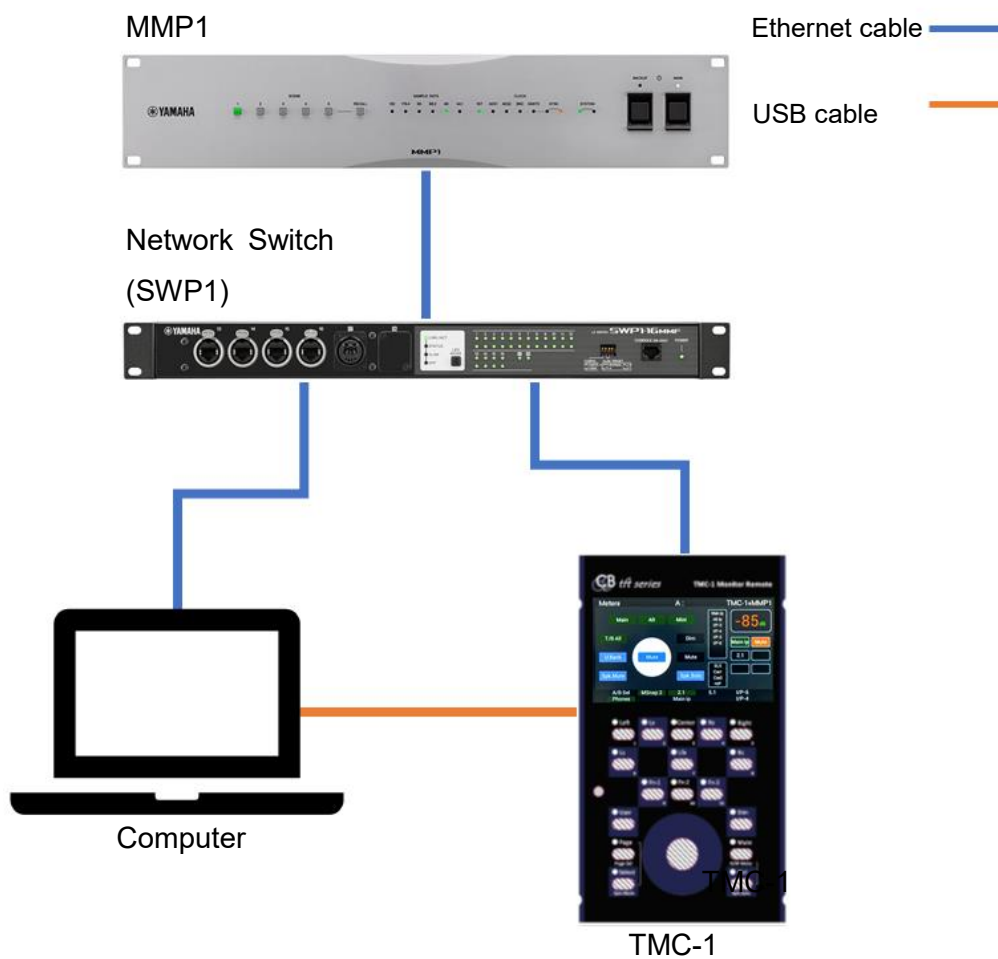
Pressing the encoder mutes or unmutes the monitor outputs. This function syncs with the [Mute] key.

\* The texts in parentheses are the ones shown in the display.

## Connection

This chapter explains how to connect the MMP1, TMC-1, and a computer.

[An example of the system configuration]



Connect the MMP1, TMC-1, and a computer to a network switch using Ethernet cables.

Use a CAT5e or higher Ethernet cable for the connection.

Connect the TMC-1 to the computer via the USB ports. This connection is required only for setting up the TMC-1. After the setup is finished, you do not have to connect them via a USB cable.

Note:

- MMP1 Editor and TMC-1 setup software can be installed on one computer.

## Setting up the system

### To set the TMC-1 operation mode

1. Press the [Page] and [Select] keys simultaneously to display the Select Page.
2. Press User Key 8 "Setup" to display the Setup Menu.
3. While holding down the [Select] key, press User key 4 "→" to display the Adv Menu 24 - MMP1 Device Emulation page.
4. Use the User Keys 3 "↑" and 7 "↓" to select the "MMP1 Compliant" mode.

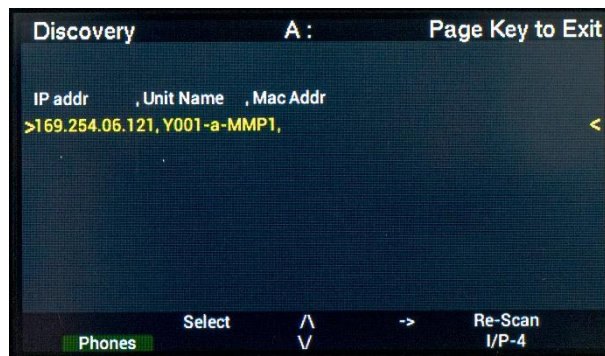


### To connect TMC-1 to MMP1

If you want to connect the TMC-1 to the MMP1 using IP addresses other than Auto IP, see "To set IP addresses" on page 9 to set the IP addresses according to your system before connecting them.

1. Press the [Page] and [Select] keys simultaneously to display the Select Page.
2. Press User Key 6 "E-Net" to display the Discovery page.

All the devices in the same network will be shown on the Discovery page. If no devices are detected, press User Key 5 "Re-Scan" to start the detection again.



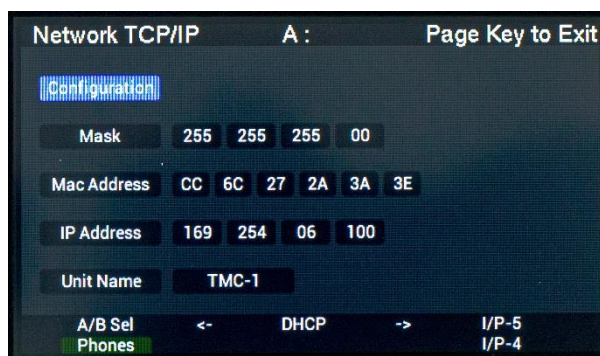


3. Use User Keys 3 "↑" and 7 "↓" to select the IP address for the MMP1 and press Key 2 "Select".

This will connect the TMC-1 to the MMP1.

You can check the TMC-1 IP address on the Network TCP/IP page by pressing User Key 4 "→".

If the TMC-1 has an IP address with a different subnet from the MMP1, pressing User Key 2 "Select" on the Discovery page will set a network address that has the same subnet as the MMP1.



4. Press the [Page] key to display the Meters page.

When the TMC-1 is connected to the MMP1, the text "No MMP1" at the top right corner of the display changes to "TMC-1+MMP1".

## To set IP addresses

The TMC-1 can be connected to a MMP1 using IP addresses obtained by either of the following three methods: AUTO (link-local address), DHCP, and static IP.

If they are AUTO IP, devices will be connected to each other with the default settings and no additional settings are needed.

### MMP1 IP address

Set the IP address using DIP switches 7 and 8 on the rear panel of the MMP1. For details on how to set an IP address, see the MMP1 Getting Started manual.

## **TMC-1 IP address**

The TMC-1 IP address can be set using the TMC-1 setup software. For details, see "To set TMC-1 IP address" on page 12.

After assigning the IP address, check the IP address on the Discovery page.

## **Precautions for a system with a Dante network**

Since the TMC-1 has a Fast Ethernet port, turn on the IGMP snooping and querier settings of the network switch in a system that runs together with a Dante network.

See the user guide of the network switch for details.

## **Changing the TMC-1 Settings**

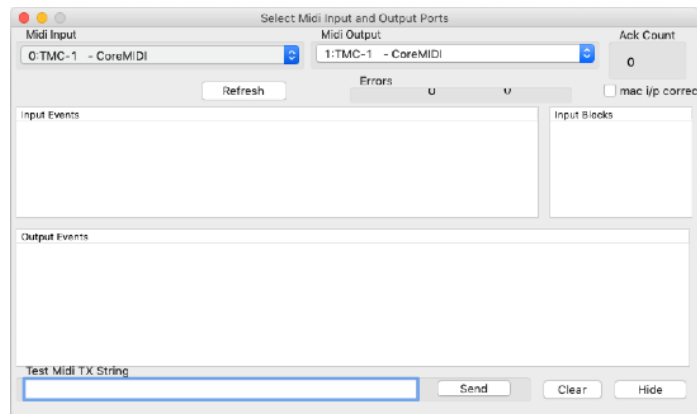
You can change the TMC-1 settings using the TMC-1 setup software.

This section explains how to connect the TMC-1 to the software and how to change the settings of the TMC-1 functions.

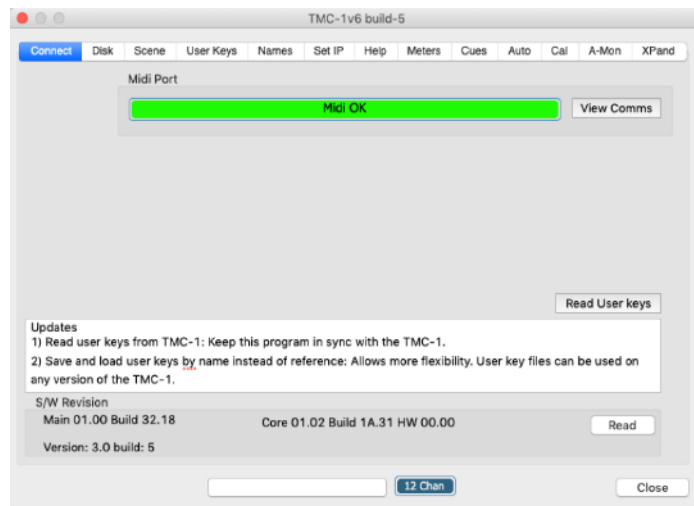
### **To connect TMC-1 to TMC-1 setup software.**

- 1. Download TMC-1 setup software from the following website.**  
<https://www.cbelectronics.co.uk/tmc1>
- 2. Make sure that the computer is connected to the TMC-1 via a USB cable, and then start the TMC-1 setup software.**
- 3. Select the [Connect] tab, and then click the [View Coms] button.**
- 4. Select "0:TMC-1-XXXX" for both MIDI Input and Output in the Select Midi Input and Output Ports window.**

After that, click the [Hide] button to close the window.



When the software is connected to the TMC-1, the MIDI Port column will change from "Midi Not Open" in a red bar to "Midi OK" in a green bar.



## To assign a function to the User Keys

You can change the functions assigned to the User Keys in the [User Key] tab.

Select a function to be assigned to each User Key from the pull-down menus.

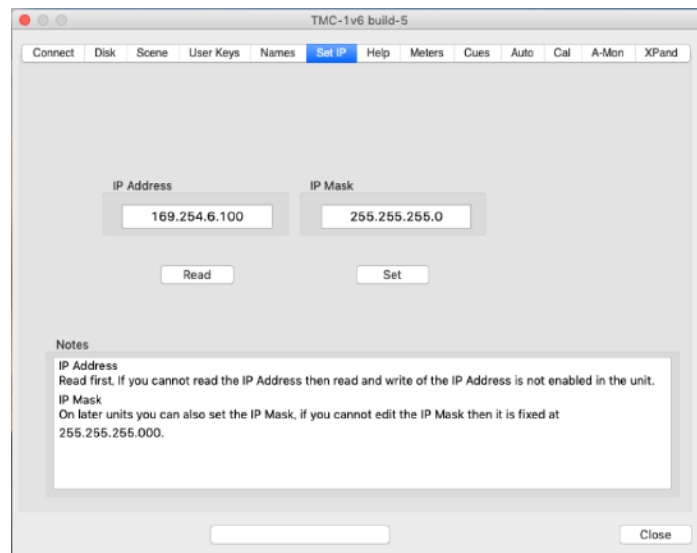
The TMC-1 has two banks for the User Keys and you can switch the bank between 1 and 2 in the [User Key] tab.

## To set TMC-1 IP address

You can set a TMC-1 IP address in the [Set IP] tab.

Input an IP address and subnet mask to the "IP Address" and "IP Mask" columns respectively, and click the [Set] button. This will set the IP address for the TMC-1.

If you click the [Read] button, the current IP address will be shown.



## To update TMC-1 Firmware and factory reset

You can update the TMC-1 firmware and reset it to the default settings using MidiUpd software.

For details about MidiUpd, see the MidiUpd guide.

<https://www.cbelectronics.co.uk/tmc1-downloads>

## User Key List (Version 19612)

User Key functions	Description
Sum	Turns on or off "SUM" (Monitor Source Summing).
Spk Solo	Turns on or off SOLO for a specified main monitor. (If used with the MUTE function, the MUTE function will be prioritized.)
Spk Mute	Mutes or unmutes a specified main monitor.
A/B Sel	Switches the monitor level between A and B.
Main	Selects Speaker Set A.
Alt	Selects Speaker Set B.
Mini	Selects Speaker Set C.
Main ip	Selects Monitor Source 1.
Alt ip	Selects Monitor Source 2.
I/P-3 ... 8	Selects Monitor Source 3 to 8.
U.Bank	Switches the User Key Bank between 1 and 2.
St Down	Turns on or off the downmix audio output.
SLS PFL	Selects or cancels Cue 1 for the input source of the cue output.
Q1 PFL	Selects or cancels Cue 2 for the input source of the cue output.
Q2 PFL	Selects or cancels Cue 3 for the input source of the cue output.
H/P PFL	Selects or cancels Cue 4 for the input source of the cue output.
T/B M1 ... M4	Turns on or off the Talkback Destination for 1...4.
Cough 1 ... 8	Turns on or off Cough for 1...8.

Audioversity

by Yamaha Pro Audio