



# RM-W Firmware Update Instructions (Using Web UI)

## ■ Summary

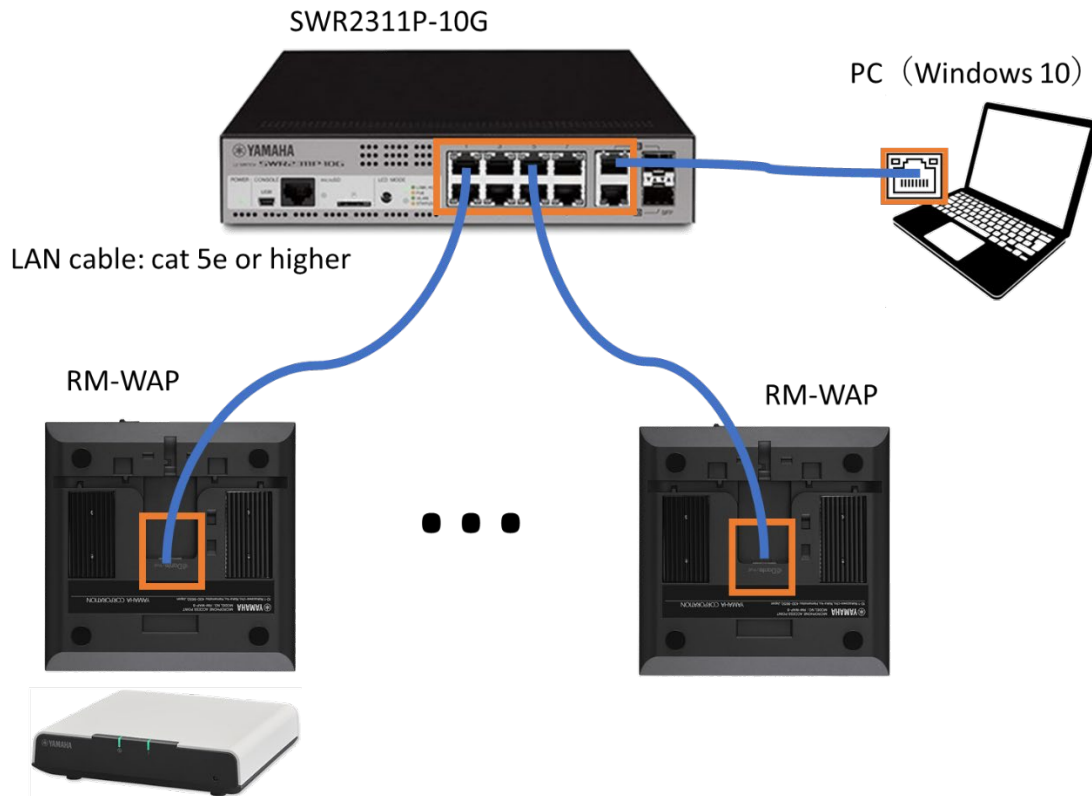
According to the RM-WAP-8 firmware update procedure to update the RM-WAP-8 to the latest firmware.

## ■ Advanced Requirements

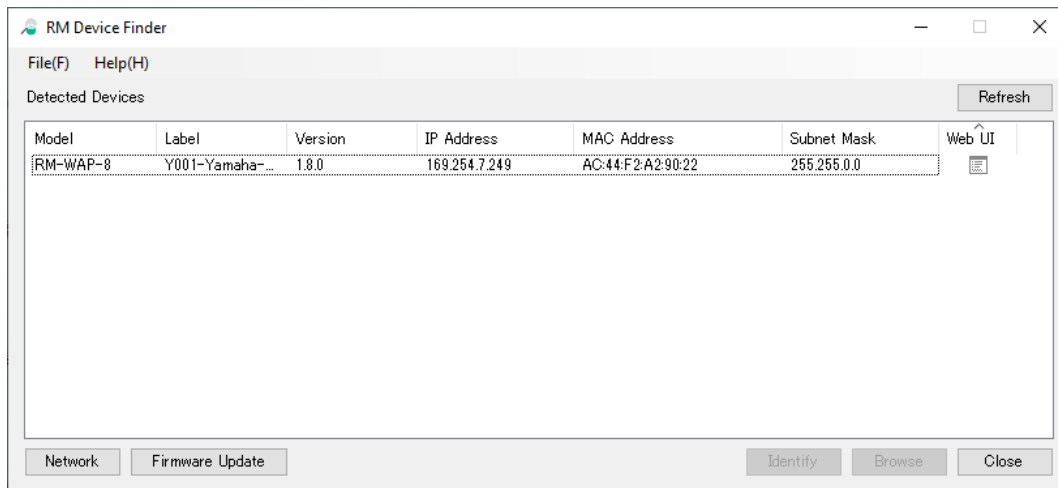
- 1x Windows PC with wired ethernet connector
- 1x PoE network switch
- LAN cable (CAT5e or higher)
- PC application "RM Device Finder"
- Firmware file (RM-WAP\_Firmware\_182.bundle)

## 【Procedures】

### 1. Connect devices as follows.

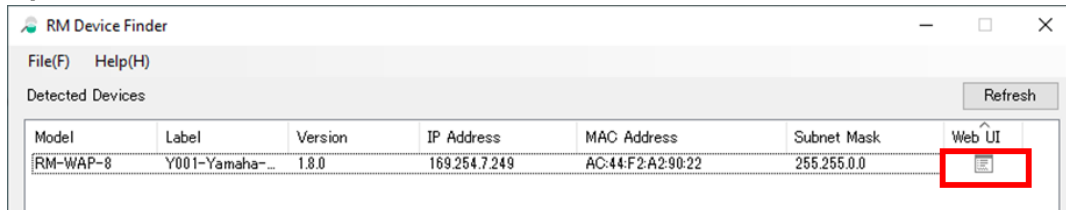


### 2. Launch RM Device Finder to find devices.



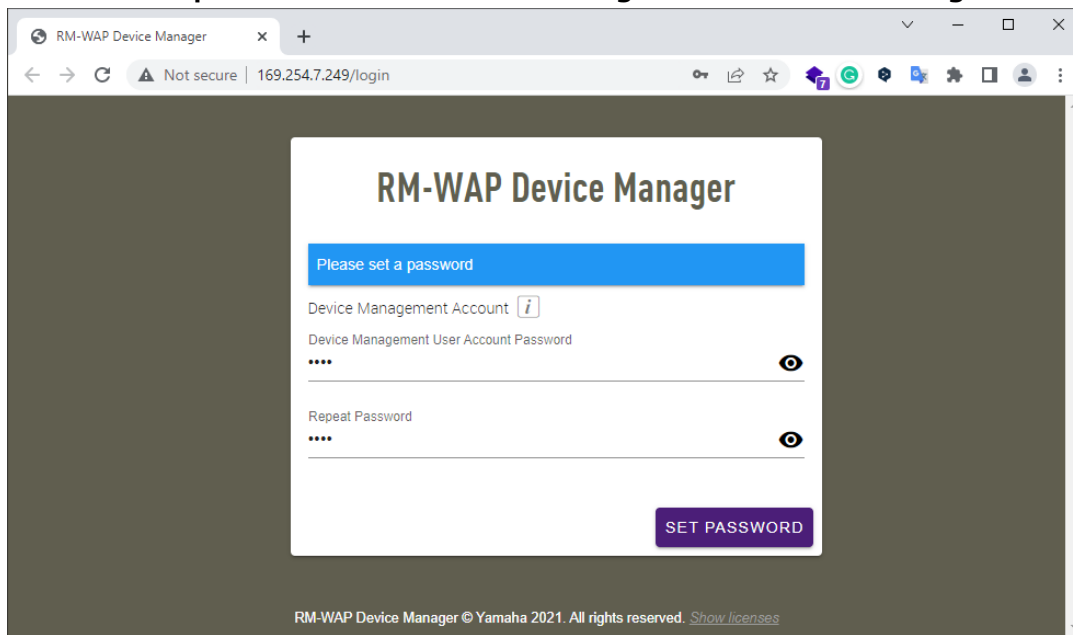
Note: If devices can not be found on the RM Device Finder correctly, please see the reference.

### 3. Open Web UI from RM Device Finder.

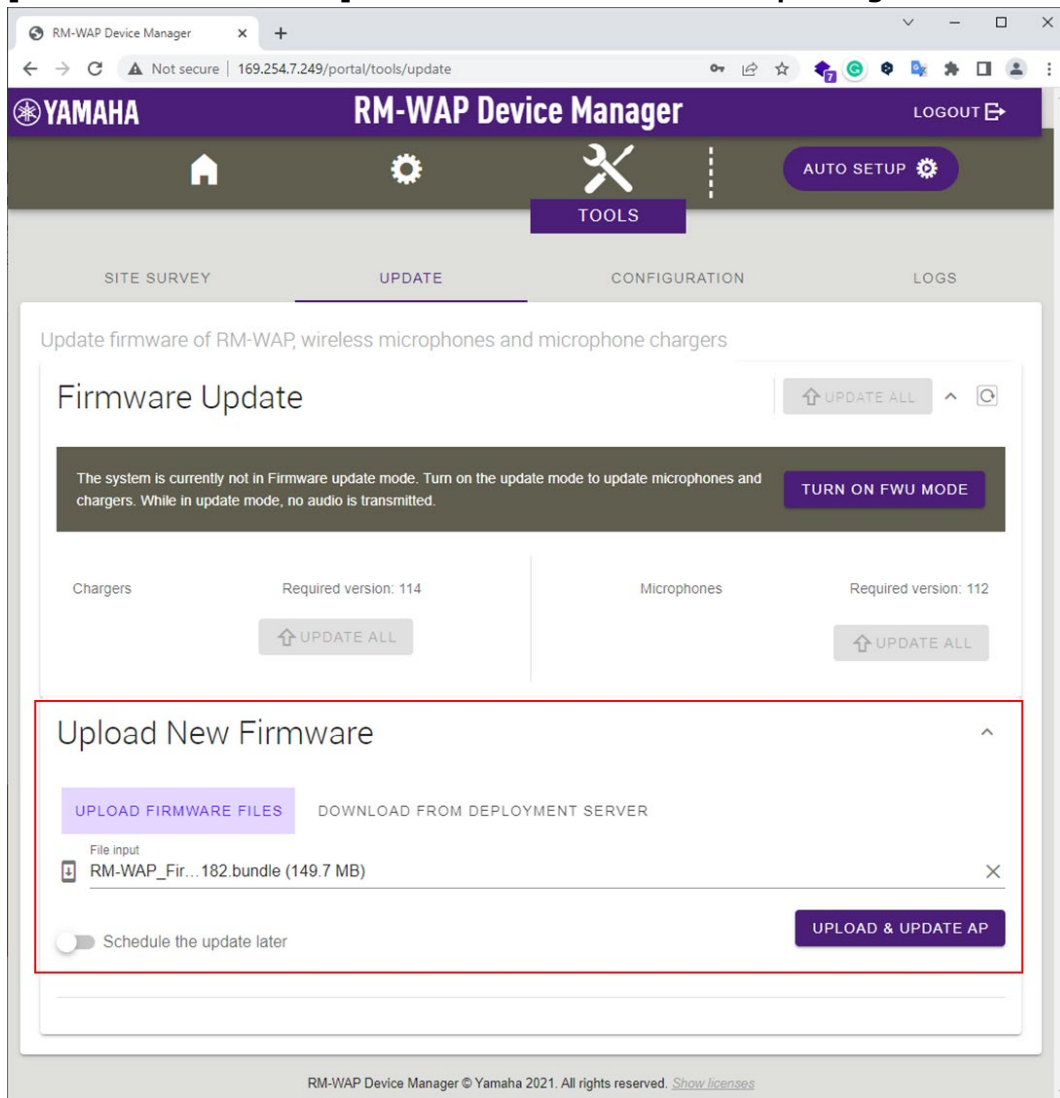


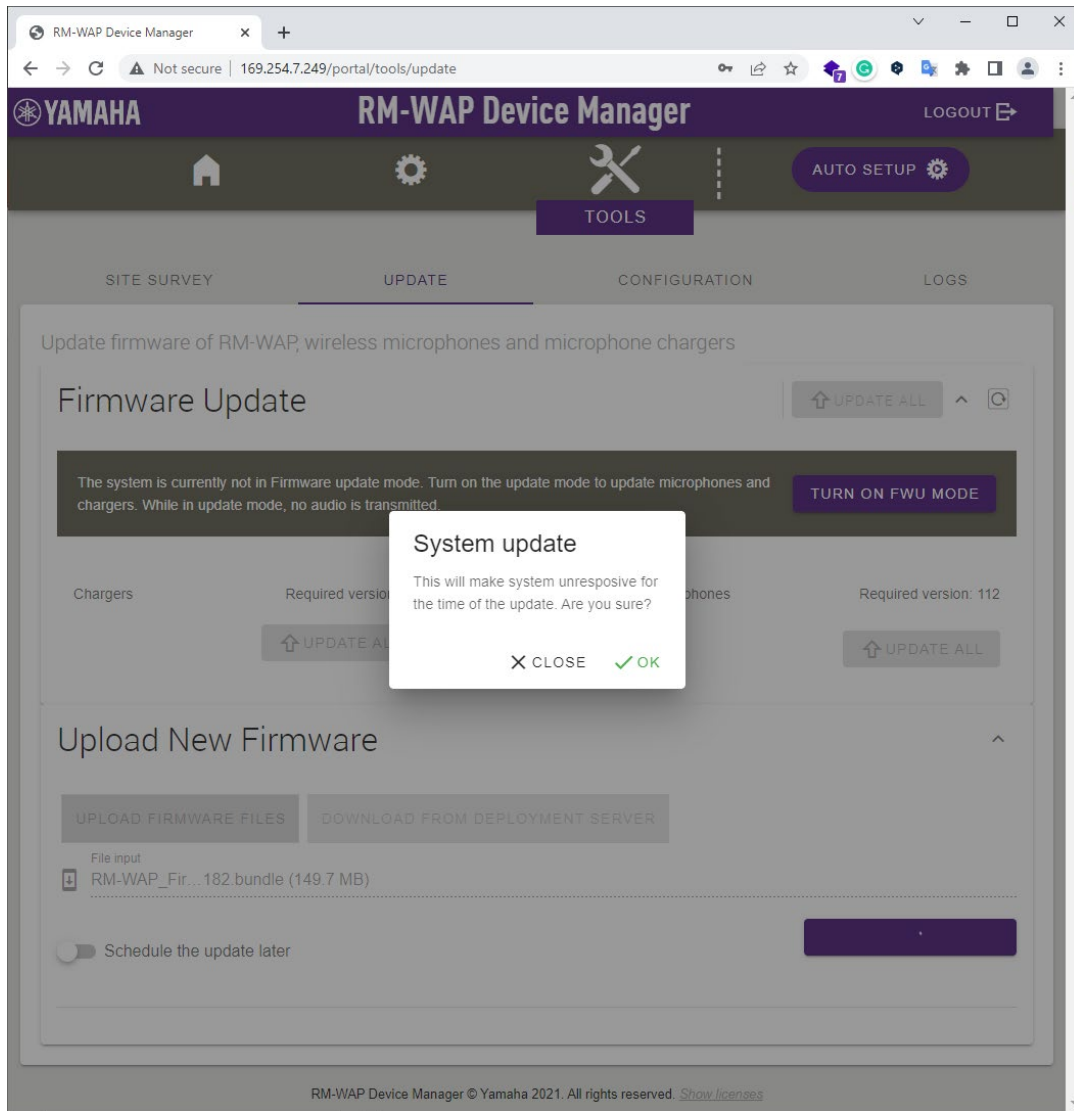
Click the icon in the Web UI column of the RM Device Finder to open the Web UI for the device.

### 4. Set an initial password to the device and log in to the device manager.



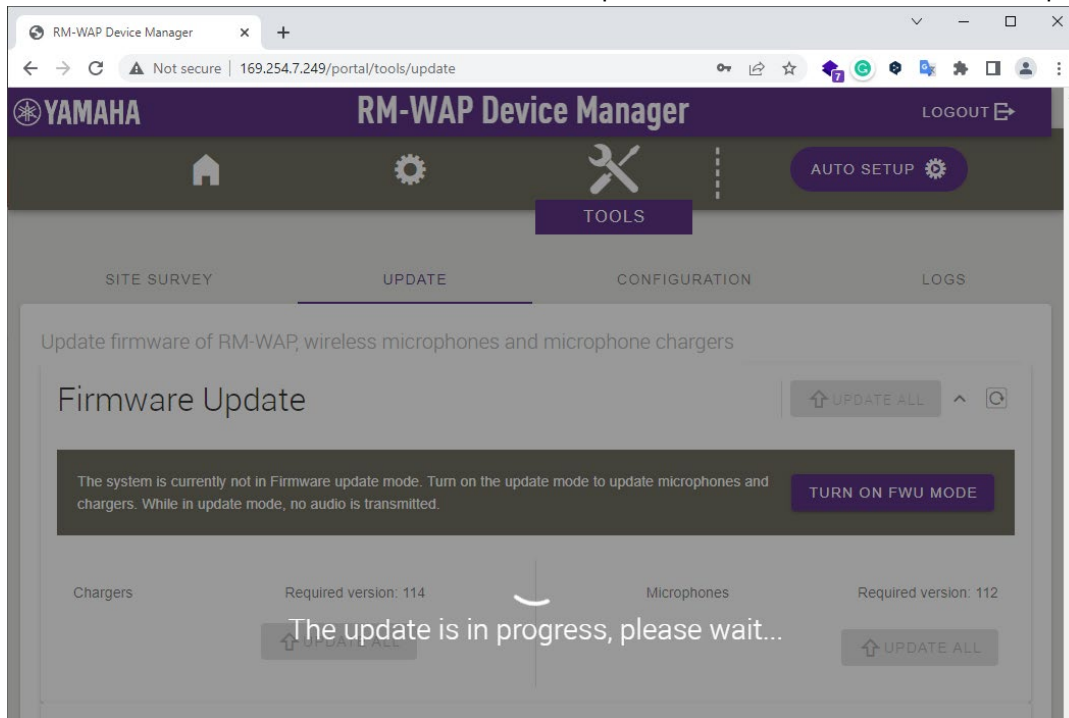
5. Move to **TOOLS>UPDATE** page from the top menu and specify the firmware file. Click **[UPLOAD & UPDATE AP]** button to execute firmware updating.



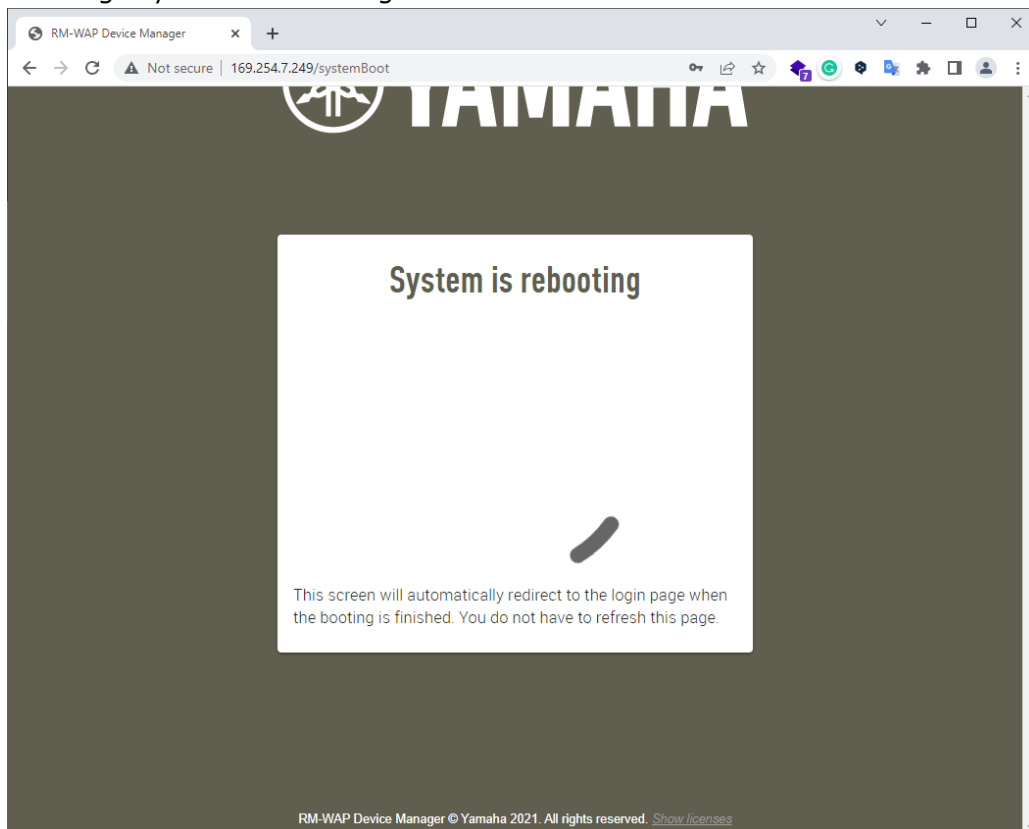


## 6. Wait till the firmware updating is done.

During the firmware updating, “The update is in progress, please wait” on the Web UI will be shown and information indicator on the front panel of the device flashes white quickly.

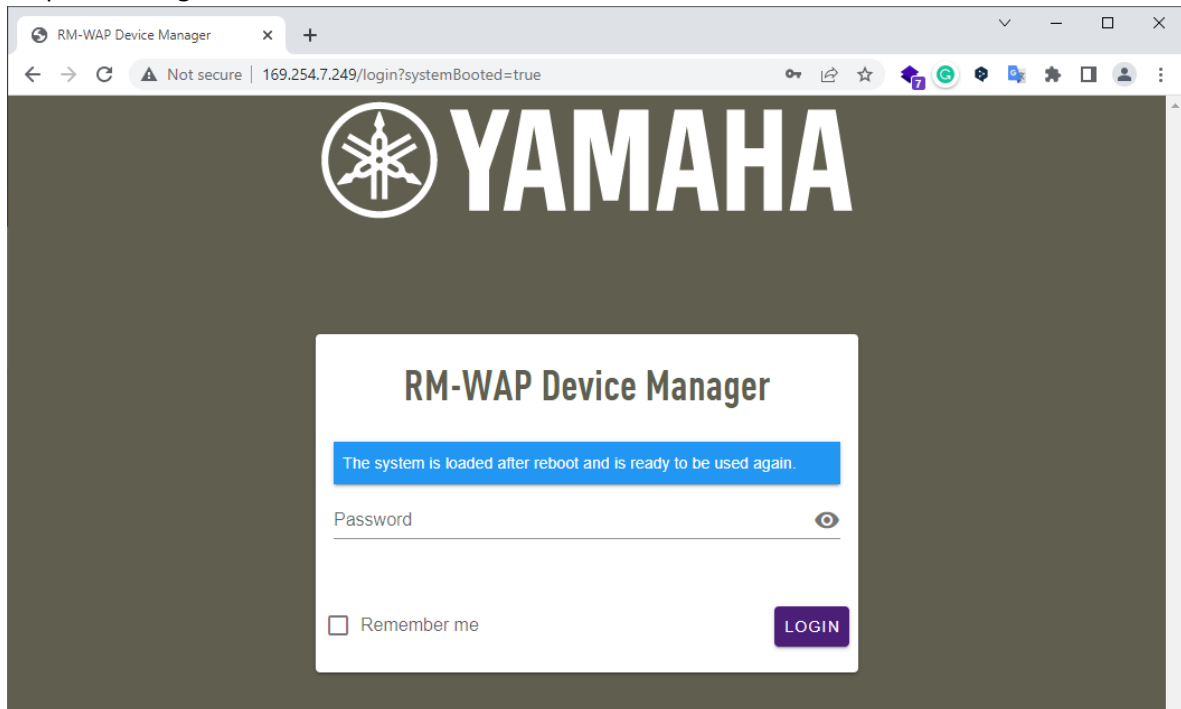


When updating is completed, the device will reboot automatically and the Web UI changes showing “System is rebooting.”

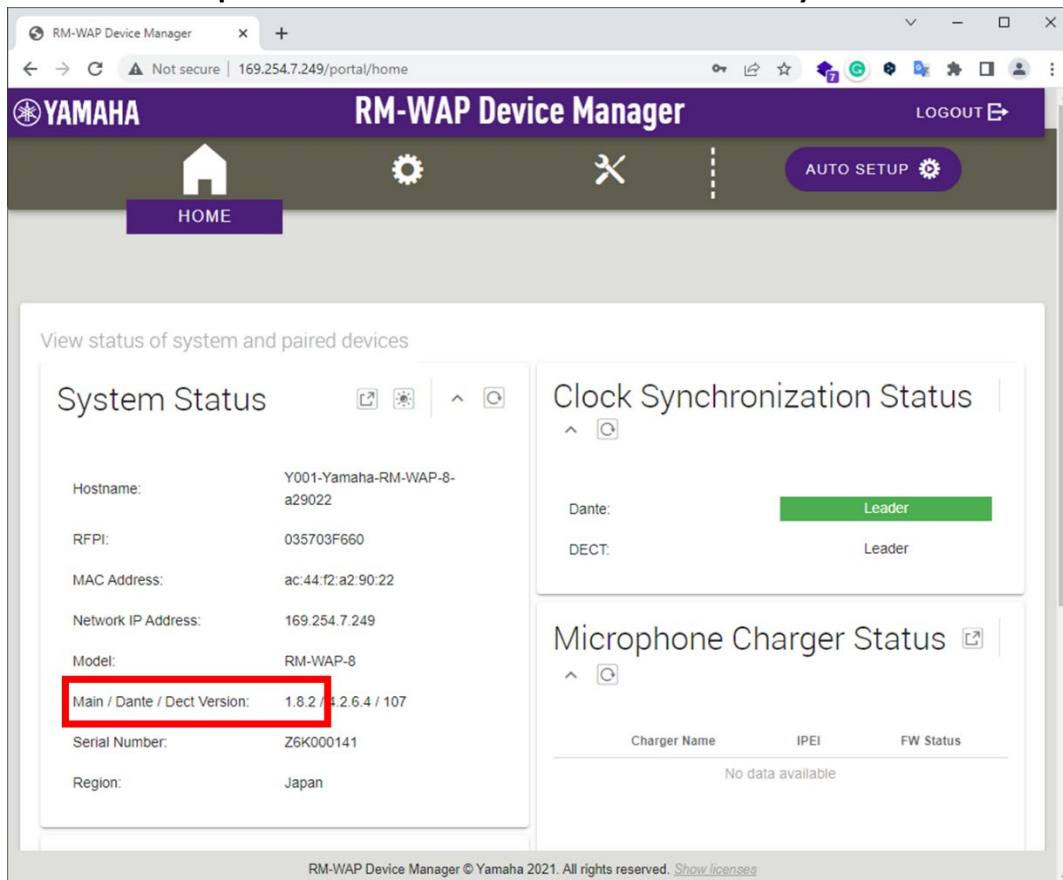


**7. Log in to the device manager.**

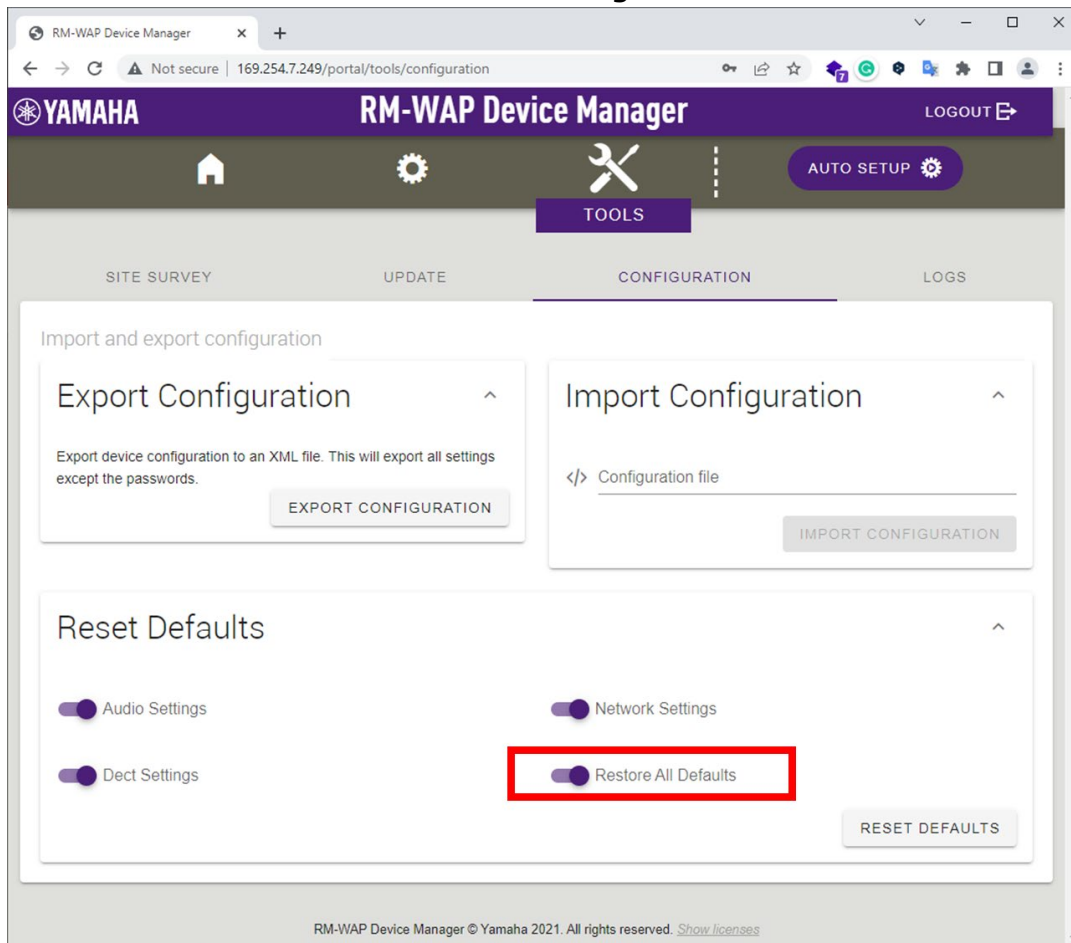
After rebooting is done, log in page will be shown on Web UI. Type the same password set in step 4 and login the Web UI.



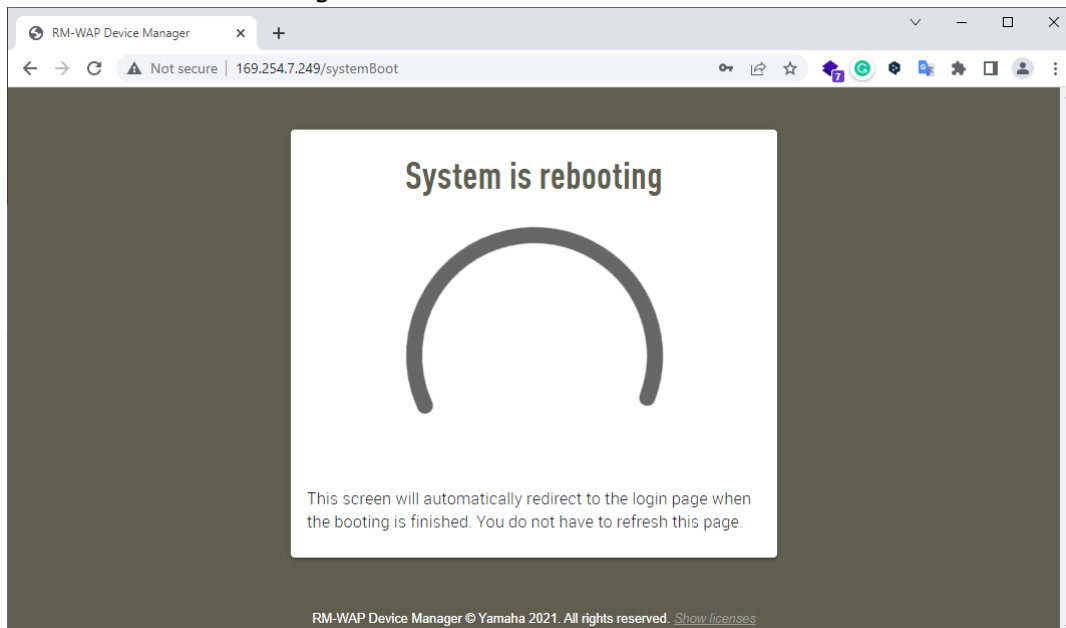
**8. Confirm if an updated firmware version is indicated in System Status of HOME page.**



9. Move to **TOOLS>CONFIGURATION** page and press **“RESET DEFAULTS”** after selecting **“Restore All Defaults”** to initialize all settings.

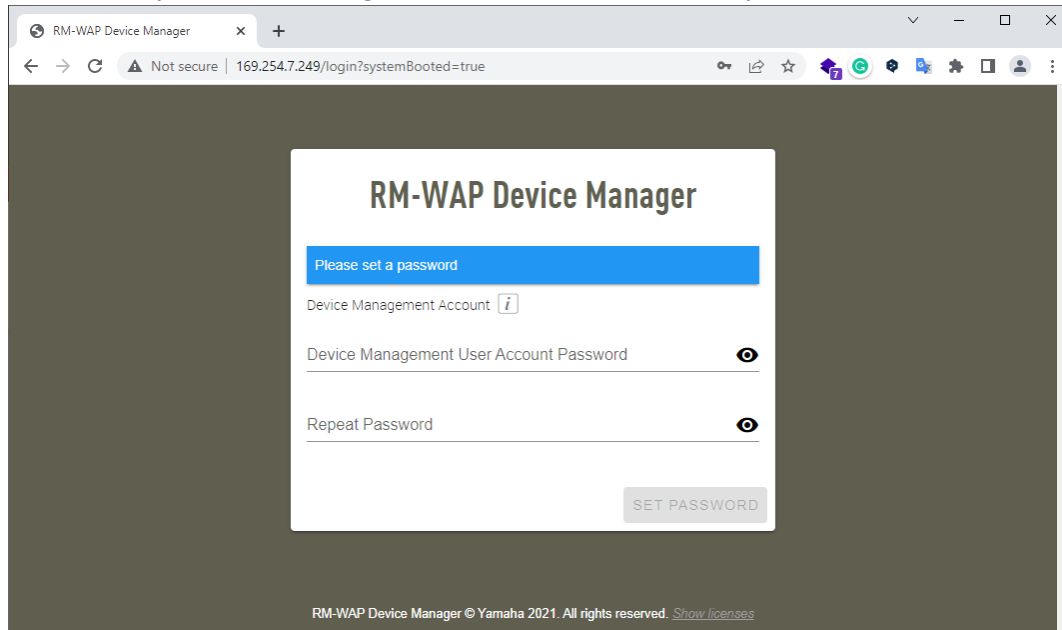


After executing the initialization, web UI automatically shows **“System is rebooting”**. Wait till the web UI will be changed the screen.



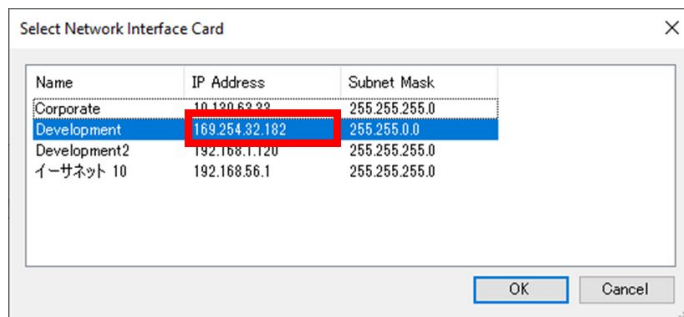
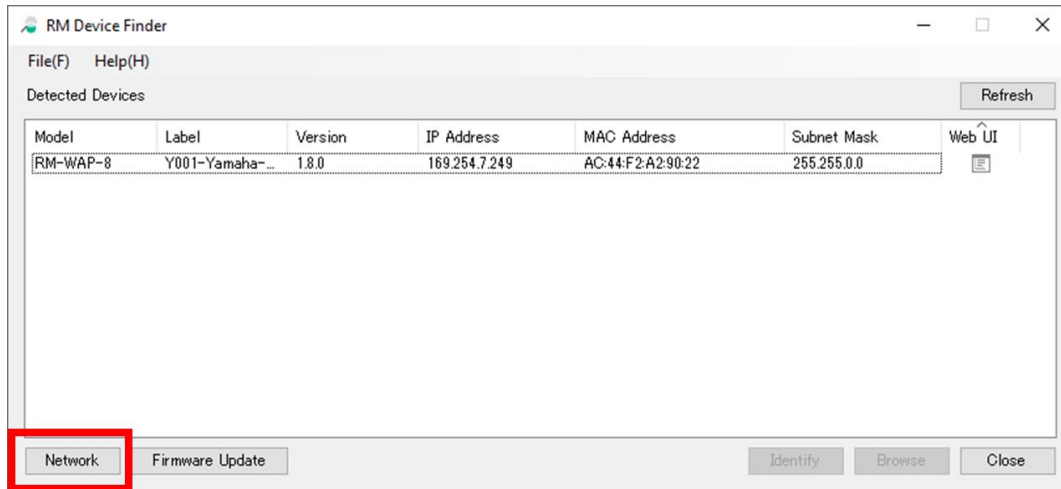


If an initial password setting is shown, this is the end of process.



Reference: In case when no device can be found on the RM Device Finder

1. Click "Network" button to open the "Select Network Interface Card" window.
2. Confirm if the wired network interface which is connected with device network is selected and its IP address starts from "169.254."



If another network interface is selected, select an appropriate network interface.

If the IP address does not start from "169.254.", set DHCP to the interface in the Windows PC setting.