



YAMAHA ASIO DirectKS Driver for Windows Owner's Manual

ATTENTION

SOFTWARE LICENSE AGREEMENT

PLEASE READ THIS SOFTWARE LICENSE AGREEMENT ("AGREEMENT") CAREFULLY BEFORE USING THIS SOFTWARE. YOU ARE ONLY PERMITTED TO USE THIS SOFTWARE PURSUANT TO THE TERMS AND CONDITIONS OF THIS AGREEMENT. THIS AGREEMENT IS BETWEEN YOU (AS AN INDIVIDUAL OR LEGAL ENTITY) AND YAMAHA CORPORATION ("YAMAHA").

BY DOWNLOADING, INSTALLING, COPYING, OR OTHERWISE USING THIS SOFTWARE YOU ARE AGREEING TO BE BOUND BY THE TERMS OF THIS LICENSE. IF YOU DO NOT AGREE WITH THE TERMS, DO NOT DOWNLOAD, INSTALL, COPY, OR OTHERWISE USE THIS SOFTWARE. IF YOU HAVE DOWNLOADED OR INSTALLED THE SOFTWARE AND DO NOT AGREE TO THE TERMS, PROMPTLY DELETE THE SOFTWARE.

1. GRANT OF LICENSE AND COPYRIGHT

Yamaha hereby grants you the right to use one copy of the software program(s) and data ("SOFTWARE") accompanying this Agreement. The term SOFTWARE shall encompass any updates to the accompanying software and data. The SOFTWARE is owned by Yamaha and/or Yamaha's licensor(s), and is protected by relevant copyright laws and all applicable treaty provisions. While you are entitled to claim ownership of the data created with the use of SOFTWARE, the SOFTWARE will continue to be protected under relevant copyrights.

- **You may** use the SOFTWARE on a **single computer**.
- **You may** make one copy of the SOFTWARE in machine-readable form for backup purposes only, if the SOFTWARE is on media where such backup copy is permitted. On the backup copy, you must reproduce Yamaha's copyright notice and any other proprietary legends that were on the original copy of the SOFTWARE.
- **You may** permanently transfer to a third party all your rights in the SOFTWARE, provided that you do not retain any copies and the recipient reads and agrees to the terms of this Agreement.

2. RESTRICTIONS

- **You may not** engage in reverse engineering, disassembly, decompilation or otherwise deriving a source code form of the SOFTWARE by any method whatsoever.
- **You may not** reproduce, modify, change, rent, lease, or distribute the SOFTWARE in whole or in part, or create derivative works of the SOFTWARE.
- **You may not** electronically transmit the SOFTWARE from one computer to another or share the SOFTWARE in a network with other computers.
- **You may not** use the SOFTWARE to distribute illegal data or data that violates public policy.
- **You may not** initiate services based on the use of the SOFTWARE without permission by Yamaha Corporation.

Copyrighted data, including but not limited to MIDI data for songs, obtained by means of the SOFTWARE, are subject to the following restrictions which you must observe.

- Data received by means of the SOFTWARE may not be used for any commercial purposes without permission of the copyright owner.
- Data received by means of the SOFTWARE may not be duplicated, transferred, or distributed, or played back or performed for listeners in public without permission of the copyright owner.
- The encryption of data received by means of the SOFTWARE may not be removed nor may the electronic watermark be modified without permission of the copyright owner.

3. TERMINATION

This Agreement becomes effective on the day that you receive the SOFTWARE and remains effective until terminated. If any copyright law or provisions of this Agreement is violated, the Agreement shall terminate automatically and immediately without notice from Yamaha. Upon such termination, you must immediately destroy the licensed SOFTWARE, any accompanying written documents and all copies thereof.

4. DISCLAIMER OF WARRANTY ON SOFTWARE

You expressly acknowledge and agree that use of the SOFTWARE is at your sole risk. The SOFTWARE and related documentation are provided "AS IS" and without warranty of any kind. NOTWITHSTANDING ANY OTHER PROVISION OF THIS AGREEMENT, YAMAHA EXPRESSLY DISCLAIMS ALL WARRANTIES AS TO THE SOFTWARE, EXPRESS, AND IMPLIED, INCLUDING BUT NOT LIMITED TO THE IMPLIED WARRANTIES OF MERCHANTABILITY, FITNESS FOR A PARTICULAR PURPOSE AND NON-INFRINGEMENT OF THIRD PARTY RIGHTS. SPECIFICALLY, BUT WITHOUT LIMITING THE FOREGOING, YAMAHA DOES NOT WARRANT THAT THE SOFTWARE WILL MEET YOUR REQUIREMENTS, THAT THE OPERATION OF THE SOFTWARE WILL BE UNINTERRUPTED OR ERROR-FREE, OR THAT DEFECTS IN THE SOFTWARE WILL BE CORRECTED.

5. LIMITATION OF LIABILITY

YAMAHA'S ENTIRE OBLIGATION HEREUNDER SHALL BE TO PERMIT USE OF THE SOFTWARE UNDER THE TERMS HEREOF. IN NO EVENT SHALL YAMAHA BE LIABLE TO YOU OR ANY OTHER PERSON FOR ANY DAMAGES, INCLUDING, WITHOUT LIMITATION, ANY DIRECT, INDIRECT, INCIDENTAL OR CONSEQUENTIAL DAMAGES, EXPENSES, LOST PROFITS, LOST DATA OR OTHER DAMAGES ARISING OUT OF THE USE, MISUSE OR INABILITY TO USE THE SOFTWARE, EVEN IF YAMAHA OR AN AUTHORIZED DEALER HAS BEEN ADVISED OF THE POSSIBILITY OF SUCH DAMAGES. In no event shall Yamaha's total liability to you for all damages, losses and causes of action (whether in contract, tort or otherwise) exceed the amount paid for the SOFTWARE.

6. THIRD PARTY SOFTWARE

Third party software and data ("THIRD PARTY SOFTWARE") may be attached to the SOFTWARE. If, in the written materials or the electronic data accompanying the Software, Yamaha identifies any software and data as THIRD PARTY SOFTWARE, you acknowledge and agree that you must abide by the provisions of any Agreement provided with the THIRD PARTY SOFTWARE and that the party providing the THIRD PARTY SOFTWARE is responsible for any warranty or liability related to or arising from the THIRD PARTY SOFTWARE. Yamaha is not responsible in any way for the THIRD PARTY SOFTWARE or your use thereof.

- Yamaha provides no express warranties as to the THIRD PARTY SOFTWARE. IN ADDITION, YAMAHA EXPRESSLY DISCLAIMS ALL IMPLIED WARRANTIES, INCLUDING BUT NOT LIMITED TO THE IMPLIED WARRANTIES OF MERCHANTABILITY AND FITNESS FOR A PARTICULAR PURPOSE, as to the THIRD PARTY SOFTWARE.
- Yamaha shall not provide you with any service or maintenance as to the THIRD PARTY SOFTWARE.
- Yamaha is not liable to you or any other person for any damages, including, without limitation, any direct, indirect, incidental or consequential damages, expenses, lost profits, lost data or other damages arising out of the use, misuse or inability to use the THIRD PARTY SOFTWARE.

7. GENERAL

This Agreement shall be interpreted according to and governed by Japanese law without reference to principles of conflict of laws. Any dispute or procedure shall be heard before the Tokyo District Court in Japan. If for any reason a court of competent jurisdiction finds any portion of this Agreement to be unenforceable, the remainder of this Agreement shall continue in full force and effect.

8. COMPLETE AGREEMENT

This Agreement constitutes the entire agreement between the parties with respect to use of the SOFTWARE and any accompanying written materials and supersedes all prior or contemporaneous understandings or agreements, written or oral, regarding the subject matter of this Agreement. No amendment or revision of this Agreement will be binding unless in writing and signed by a fully authorized representative of Yamaha.

Special Notices

- The software and this owner's manual are exclusive copyrights of Yamaha Corporation.
- Please read carefully the Software Licensing Agreement at the front of this manual before installing the application.
- Copying of the software or reproduction of this manual in whole or in part by any means is expressly forbidden without the written consent of the manufacturer.
- Yamaha makes no representations or warranties with regard to the use of the software and documentation and cannot be held responsible for the results of the use of this manual and the software.
- This software is distributed without charge. The user support services are not available.
- Future upgrades of application and system software and any changes in specifications and functions will be announced at the following website. <http://www.yamahasynt.com/>
- The screen displays as illustrated in this manual are for instructional purposes only, and may appear somewhat different from the screens which appear on your computer.
- Copying of the commercially available musical data including but not limited to MIDI data and/or audio data is strictly prohibited except for your personal use.
- Windows is the registered trademarks of Microsoft® Corporation.
- Steinberg, Cubase, and ASIO are the registered trademarks of Steinberg Media Technologies GmbH.
- The company names and product names in this manual are the trademarks or registered trademarks of their respective companies.

Yamaha ASIO DirectKS Driver for Windows

This Yamaha ASIO DirectKS Driver is designed for transfer of audio data with Yamaha products. The driver can be used with DAW applications compatible with ASIO, such as Cubase LE.

In comparison to standard Windows audio drivers, this driver provides far greater reduction in delay time in playing the audio signals (latency), making recording and mixing more seamless and efficient. The driver supports two channels of audio, at 44.1/48 kHz and 16-bit resolution for both input and output.

System Requirements

Windows

Computer	Windows-based computer with built-in USB interface
OS	Windows XP Professional/XP Home Edition
CPU	750MHz or higher Intel Pentium/Celeron processor
Memory	128MB or higher
Available Hard Disk Space	1MB or more of free space

NOTE The System Requirements described above are applied to version 1.0.1 (Windows XP). Keep in mind that the software is often updated and the system requirements are subject to change. You can check the latest version information of each program and its system requirements at the following website.

<http://www.yamahasyth.com/>

The system requirements may differ slightly depending on the particular computer.

Installing the Driver

This section shows you how to install the driver.

- 1** Start the computer and use the “Administrator” account to log into Windows.
Close all applications and windows that are open.
- 2** Double click the “Setup.exe” icon to start up the installer.
- 3** Follow the instructions on screen.

Uninstall the driver

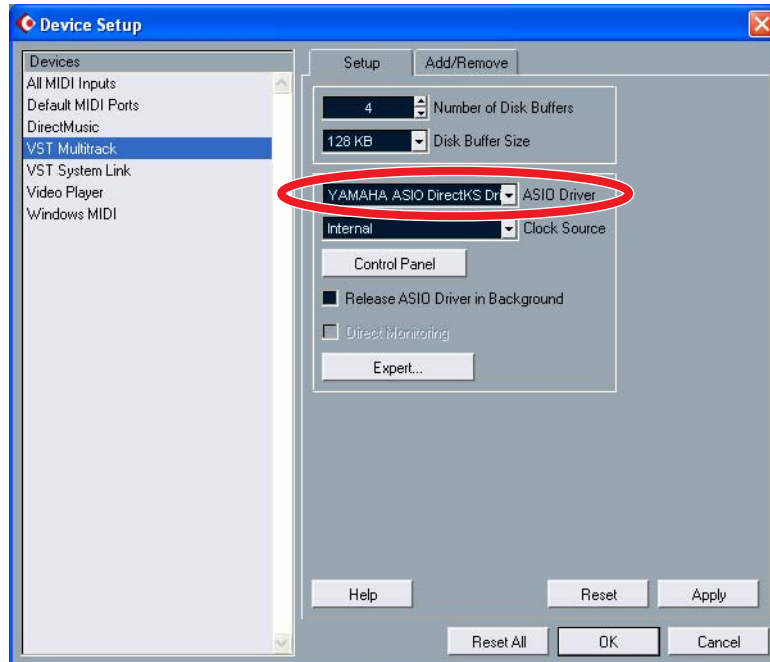
[My Computer] → [Control Panel] → double click [Add or Remove Programs] icon, select [YAMAHA ASIO DirectKS Driver] and then click the [Remove] button.

Select the driver

This section shows you how to select the driver, using Cubase LE as an example.

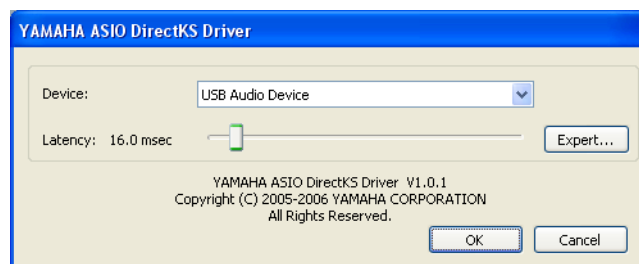
NOTE Connect the computer to the device before you select the driver.

Within Cubase LE, select [Device Setup] from the [Devices] menu to open the Device Setup window. Select [VST Multitrack] in the [Devices] field on the left side of the window. Select [YAMAHA ASIO DirectKS Driver] in the [ASIO Driver] field on the right side of the window.



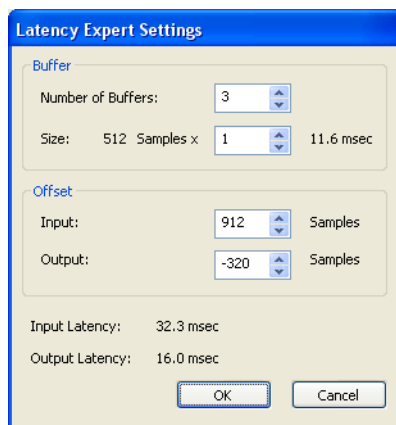
Device/Latency setting

If more than one compatible device is connected, or you wish to adjust the latency, change the settings on the control panel of the driver. If you are using Cubase LE, click the [Control Panel] in the Device Setup window above to open the YAMAHA ASIO DirectKS Driver window.



If more than one compatible device is connected, click [Device] field from the submenu to select the appropriate device.

Adjust the output latency by dragging the slider. Moving the slider to the left reduces the latency (sound delay). If the sound is intermittent or noise is audible, set the latency to a higher value. For detailed settings, click the [Expert] to open the Latency Expert Settings window.



In this window, you can set the latency by changing the number and size of the buffers. The Number of Buffers parameter links to the slider setting of the main YAMAHA ASIO DirectKS Driver window. Reducing the buffer size improves the DAW application's resolution. However, it also puts a greater load on your computer's CPU.

If you wish to correct timing more precisely, adjust the offset. Adjusting the output offset lets you correct the playback timing of the audio and MIDI data. If you recorded the sound while listening to the playback sound and the playback timing of the replay data and recorded data is incorrect, adjust the input offset in the Latency Expert window

The output latency is dependent on the buffer size, number, and setting value of the output offset. The input latency equals the buffer size plus the setting value of the input offset. The input/output latency settings are shown at the bottom of window in millisecond (msec) units.

Troubleshooting

Driver cannot be selected

- Is the device properly connected to a computer?
- Make sure the device is powered on?
- Is the device of this driver being used by any other applications?

No sound

- Is the correct device selected?
- Is the device of this driver being used by any other applications?
- Is the device properly connected to a computer?
- Make sure the device is powered on?
- Is the device of this driver being set from the Windows Control Panel?

From the [Start] menu, click [Control Panel], then double-click "Sounds and Audio Devices" icon to open the "Sounds and Audio Devices Properties" dialog window. Click the "Audio" tab, and then set "Sound playback: Default device" and "Sound recording: Default device" to a different device (other than the one you are trying to use).

The sound is intermittent or noise is audible

- Try increasing the latency value.
- Are any other applications running at the same time?
Be sure to quit all applications you are not using.
- If possible, close or disable any memory-resident software, such as screensavers or wallpaper.
- Make sure that all power-saving functions are turned off.
- If the sound is intermittent or noise is audible periodically, reset the driver.

In Cubase LE, select [Device Setup] from the [Devices] menu to open the Device Setup window. Select [VST Multitrack] in the [Devices] field on the left side of the window, and then click the [Reset] button at the bottom right of the window.

Timing is off

- If the playback timing of the audio and MIDI data is incorrect, adjust the output offset in the Latency Expert window.
- If you recorded the sound while listening to the playback sound and the playback timing of the replay data and recorded data is incorrect, adjust the input offset in the Latency Expert window.